

# Segmental Glass Y90 for HCC #2

## Dr. Zachary T. Berman

Associate Clinical Professor of Radiology  
University of California, San Diego  
San Diego, CA



This presentation reflects Dr. Berman's clinical experience with the TriNav<sup>®</sup> Infusion System. Dr. Berman is a consultant for TriSalus<sup>™</sup> Life Sciences and has been compensated for this content. Results are not predictive of outcomes in other cases.

# Case Description

- 63-year-old male with a 3cm HCC
- Treated with segmental glass Y90 TARE delivered with TriNav to achieve better tumor penetration

# Angiography

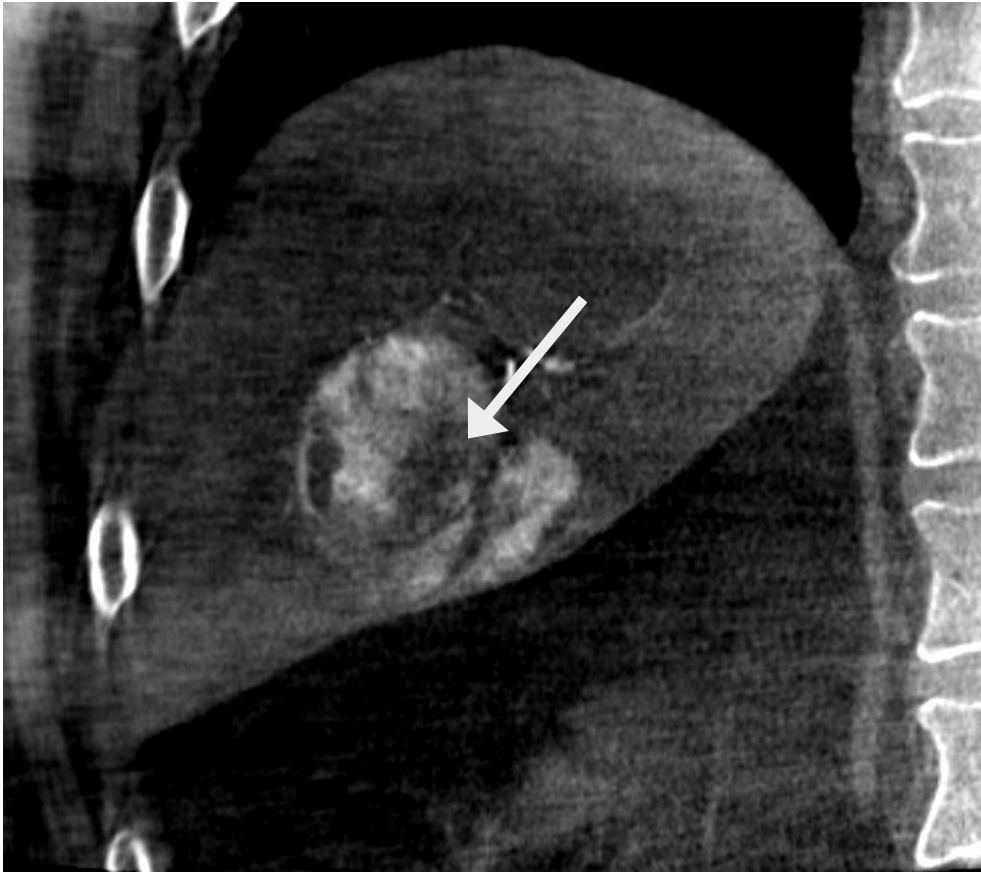


TriNav tracking distally to treat the 3cm tumor selectively

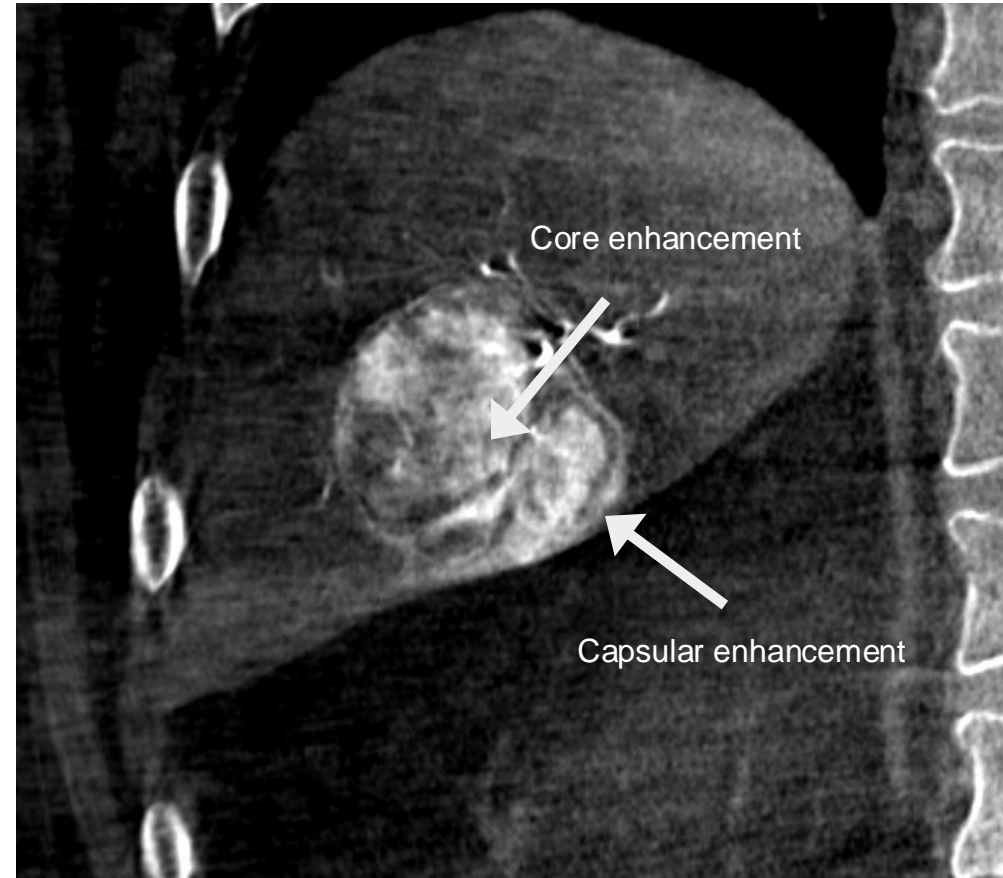
# Cone Beam CT

Imaging acquired ~5 mins apart using same catheter placement and same injection parameters

Traditional Microcatheter



TriNav

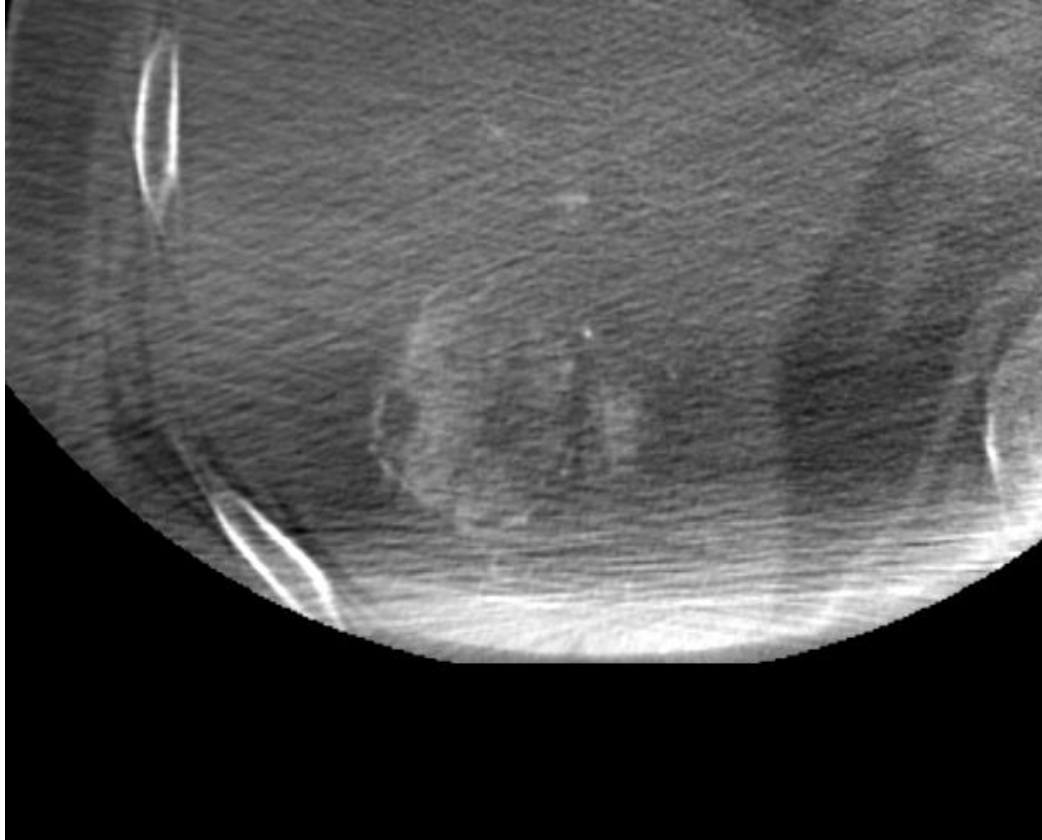


The TriNav imaging shows opacification of feeding arteries leading to increased tumor penetration and improved tumor coverage

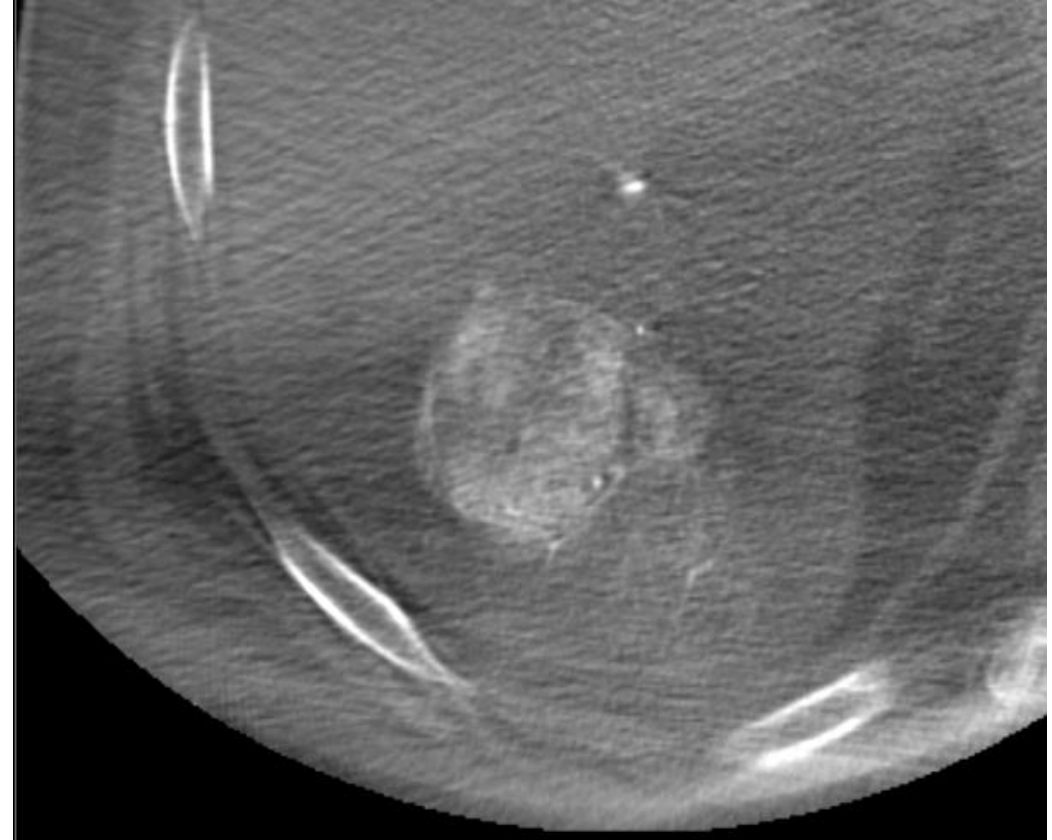
# Cone Beam CT

Imaging acquired ~5 mins apart using same catheter placement and same injection parameters

Traditional Microcatheter

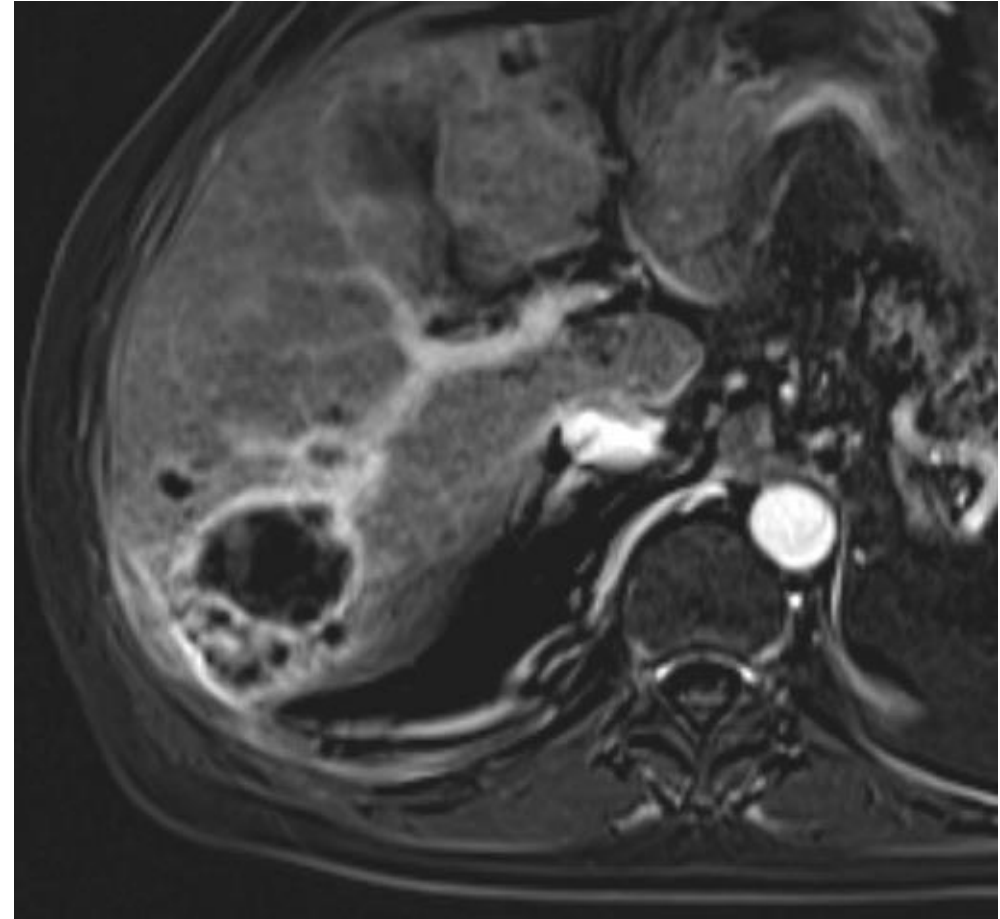
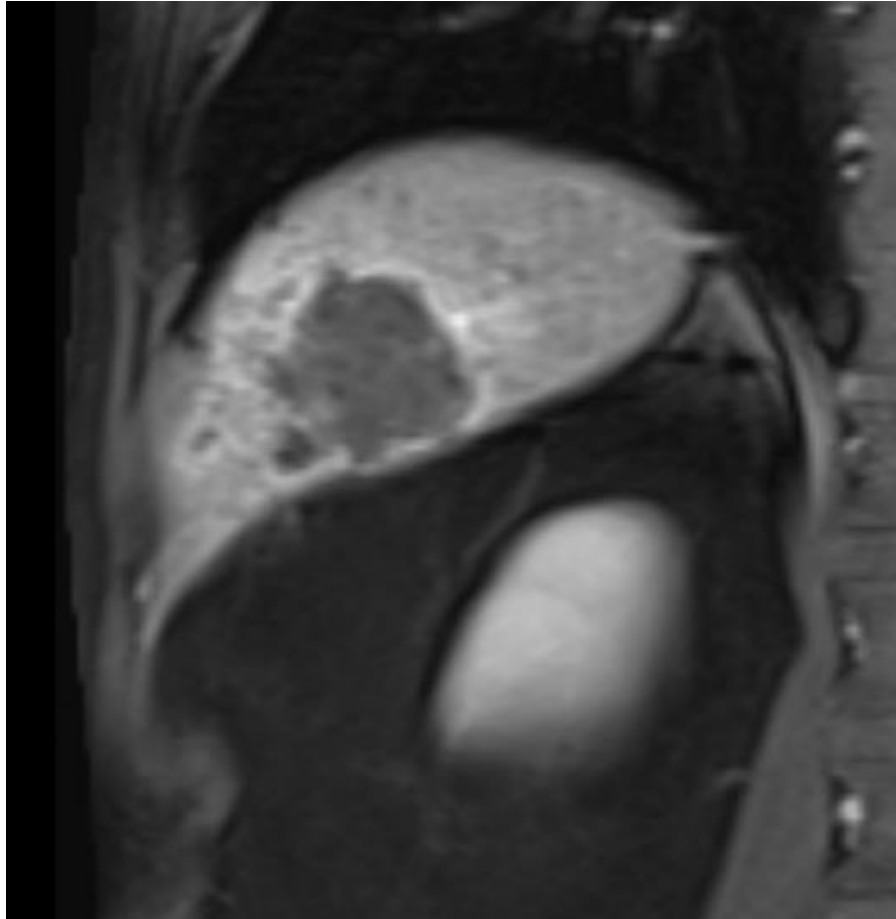


TriNav



Coronal imaging confirms the improved tumor uptake when TriNav was used in this small HCC being treating selectively

# Follow-Up MRI



No residual enhancement seen on 3-month follow-up MRI



## Indications For Use

The TriNav<sup>®</sup> and TriNav<sup>®</sup> LV Infusion Systems are intended for use in angiographic procedures. They deliver radiopaque media and therapeutic agents to selected sites in the peripheral vascular system.<sup>1,2</sup>

## Contraindications

The TriNav<sup>®</sup> and TriNav<sup>®</sup> LV Infusion Systems are not indicated for use in the vasculature of the central nervous system (including the neurovasculature) or central circulatory system (including the coronary vasculature).<sup>1,2</sup>

**Rx Only** For the safe and proper use of TriNav<sup>®</sup> and TriNav<sup>®</sup> LV, refer to their individual Instructions for Use.

This content is sponsored by TriSalus Life Sciences<sup>®</sup>. Results are not predictive of outcomes in other cases.

1. TriSalus<sup>™</sup> TriNav<sup>®</sup> Infusion System, Instructions for Use
2. TriSalus<sup>™</sup> TriNav<sup>®</sup> LV Infusion System, Instructions for Use

