



Selective Glass Y90 for Large HCC with Phrenic Watershed

Dr. Zachary T. Berman

Associate Clinical Professor of Radiology
University of California, San Diego
San Diego, CA



This presentation reflects Dr. Berman's clinical experience with the TriNav[®] Infusion System. Dr. Berman is a consultant for TriSalus[™] Life Sciences and has been compensated for this content. Results are not predictive of outcomes in other cases.

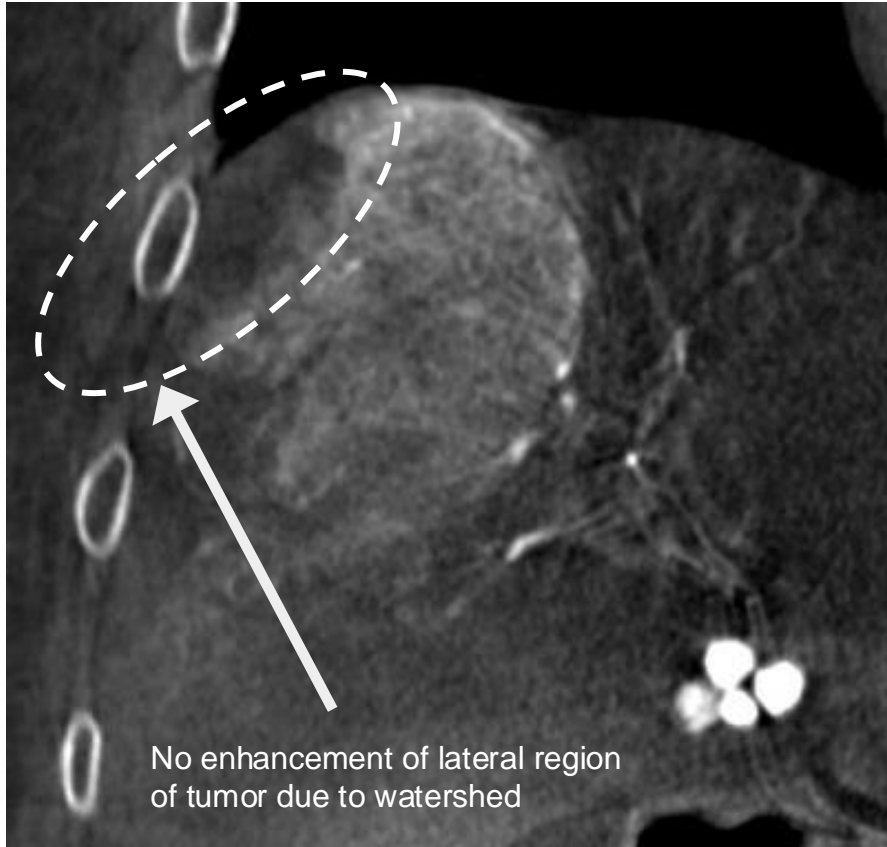


Case Description

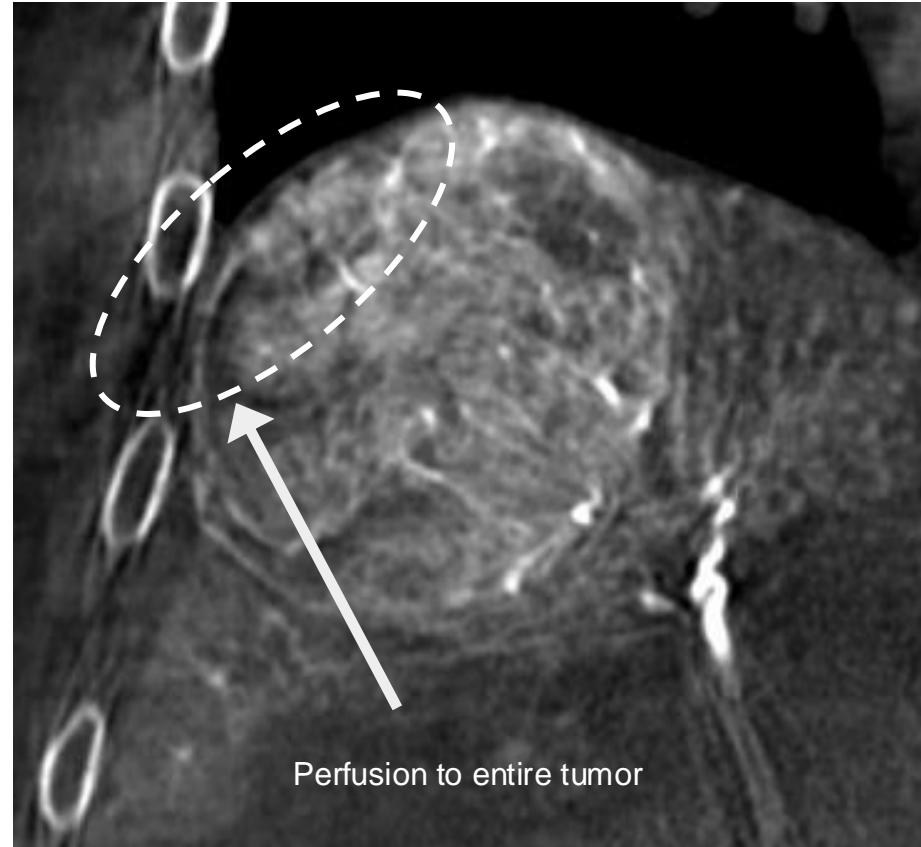
- 70-year-old male with a large, 7cm HCC tumor
- Target tumor was located in the periphery of segment 7, with phrenic artery watershed
- Treated with glass Y90 TARE
- TriNav was used to overcome competitive flow from the watershed to perfuse the entire tumor

Cone Beam CT

Traditional Microcatheter
MAA Mapping Procedure



TriNav
Radioembolization Procedure



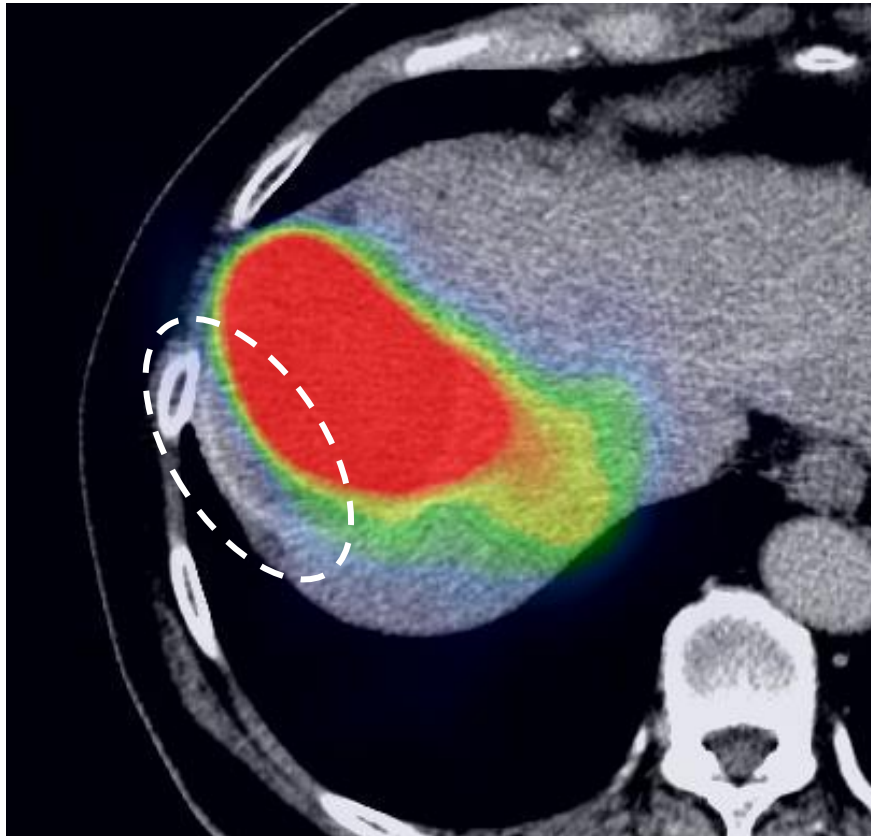
7cm segment 7 tumor,
watershed with phrenic
artery.

TriNav overcame
competitive flow from the
phrenic artery to perfuse
the lateral aspect of the
tumor.

Better enhancement
throughout entire tumor
via TriNav.

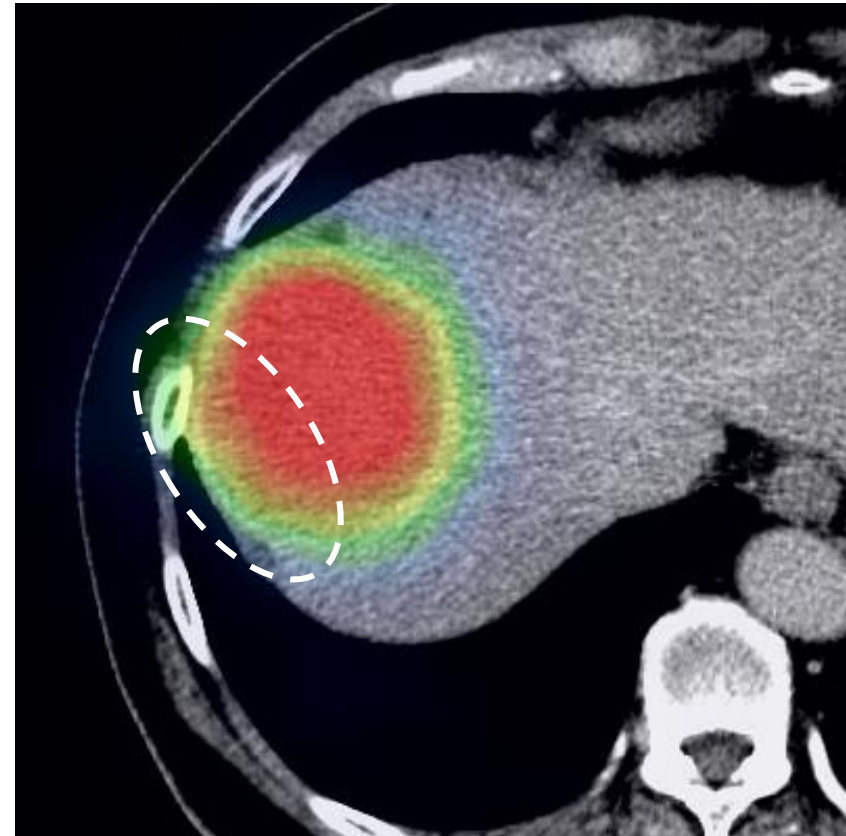
SPECT

Traditional Microcatheter
MAA SPECT



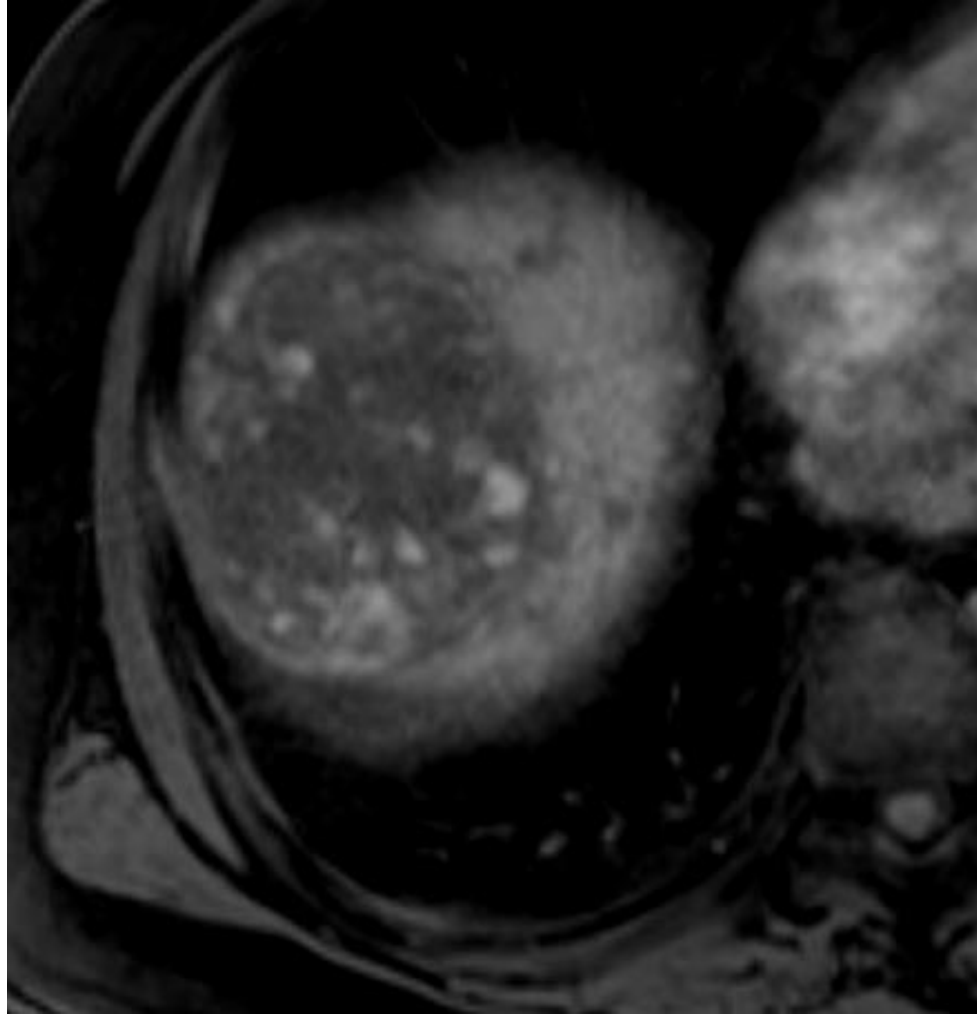
No delivery to periphery of tumor
where watershed is located

TriNav
Y90 SPECT



Complete tumor coverage

1-Month Follow-Up MRI



No nodular enhancement and no definite viable tumor.



Indications For Use

The TriNav[®] and TriNav[®] LV Infusion Systems are intended for use in angiographic procedures. They deliver radiopaque media and therapeutic agents to selected sites in the peripheral vascular system.^{1,2}

Contraindications

The TriNav[®] and TriNav[®] LV Infusion Systems are not indicated for use in the vasculature of the central nervous system (including the neurovasculature) or central circulatory system (including the coronary vasculature).^{1,2}

Rx Only For the safe and proper use of TriNav[®] and TriNav[®] LV, refer to their individual Instructions for Use.

This content is sponsored by TriSalus Life Sciences[®]. Results are not predictive of outcomes in other cases.

1. TriSalus[™] TriNav[®] Infusion System, Instructions for Use
2. TriSalus[™] TriNav[®] LV Infusion System, Instructions for Use

